

## Respite Care

Hartley Lifecare provides facility based respite care to people with physical and complex disability of all ages. This service operates from Hartley Court in Wisdom Street Hughes.



Respite is available on a 24 hour basis and throughout the year.

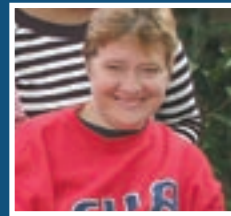
Hartley Lifecare's staff are trained to meet a variety of support including physical health care.

## Outreach Program

Hartley Lifecare Outreach program provides support for people with a disability in their own home within their community. Support can vary from individual tasks to full support over a period of 24 hours.

The supports offered vary according to the individual persons need and includes activities such as daily living, personal care, living skills promotion, social activities and process' for organisational skill progression. This new service operates throughout the ACT.

The Outreach Program is part of our Community Services team which aims to provide responsive, holistic and flexible services to people with disabilities.



### Contact details:

#### **Hartley Lifecare**

**45 Kent Street  
Deakin ACT 2600**

**Mailing address;  
PO Box 5607,  
Hughes ACT 2605**

**Ph: 02 6282 4411**

**Fax: 02 6282 5444**

**Email: [enquiries@hartley.org.au](mailto:enquiries@hartley.org.au)**

**Website: [www.hartley.org.au](http://www.hartley.org.au)**



## Hartley Lifecare Service Brochure



Hartley Lifecare has a strong commitment to the integration of people with a disability into the local community and to assist people to experience full and varied lives. It's a mandate we're fiercely proud of.

We all have the right to achieve our maximum potential, whether we have a disability or not, however people with a disability often require some support and assistance to undertake this. Hartley Lifecare provides support that is focused on the individual and flexible enough to meet their changing needs.

Hartley Lifecare has been providing accommodation support and respite care to children and adults with physical and complex disabilities for more than 40 years. In recent years Hartley Lifecare has expanded its service to include flexible and varied services and programs within the community. This includes a variety of new service models and options for people with a disability.

### Who can use Hartley Lifecare's services

Hartley Lifecare's programs are available to people, of all ages, with a physical and/or complex disability. This includes people with a disability from birth and people with an acquired brain injury.

### What is a complex disability?

Traditionally Hartley Lifecare has provided support to people with physical disabilities. This includes people with conditions such as cerebral palsy and can be result of a lifelong disability or as a result of an accident (acquired brain injury). Hartley Lifecare's current services provide support to individuals with a wider variety of complex needs which include disabilities such as epilepsy and intellectual disability. Complex needs can also include specific health care needs associated with the primary disability.

## Hartley Lifecare provides:

### Residential Services

Hartley Lifecare provides **accommodation** support to people with physical and complex disabilities throughout Canberra. This includes people with both acquired brain injuries and people who have lifelong disabilities.

- Support is provided by a team of staff who are trained specifically to meet the individual needs of the residents living within each of the homes
- Support is provided around the clock, including overnight.
- Hartley Lifecare provides support that maximizes each person's full potential
- Hartley Lifecare provides a home environment
- Hartley Lifecare welcomes and encourages the involvement of family and friends

### Community Programs

Hartley Lifecare has a commitment to the inclusion and involvement of people with a disability in the ACT community. To ensure this occurs Hartley Lifecare has established a new Community Service branch of the organisation.



Current programs include the following:

- **Recreational Program**

A program that supports people with a disability to undertake recreational activities, of their choice, within the community

- **Community Access Program**

A skills development program that assists people to acquire skills within the Community and move towards independence

- **Social Participation Group**

This program invites people in the Canberra Community both with and without a disability to join our monthly social group. This event is managed and planned by the people involved and at the destination of their choice

- **Family Governance Program**

Hartley Lifecare proudly supports this model of support which is managed by the families involved. Support so far has included recreational, vocational and a business venture known as Jackmail. This business is owned by the person with a disability and carried out with the support of staff

- **Assistive Technology Program**

In partnership with Accenture this program provides technology to people with physical disabilities to enable them to carry out a role within the workplace

